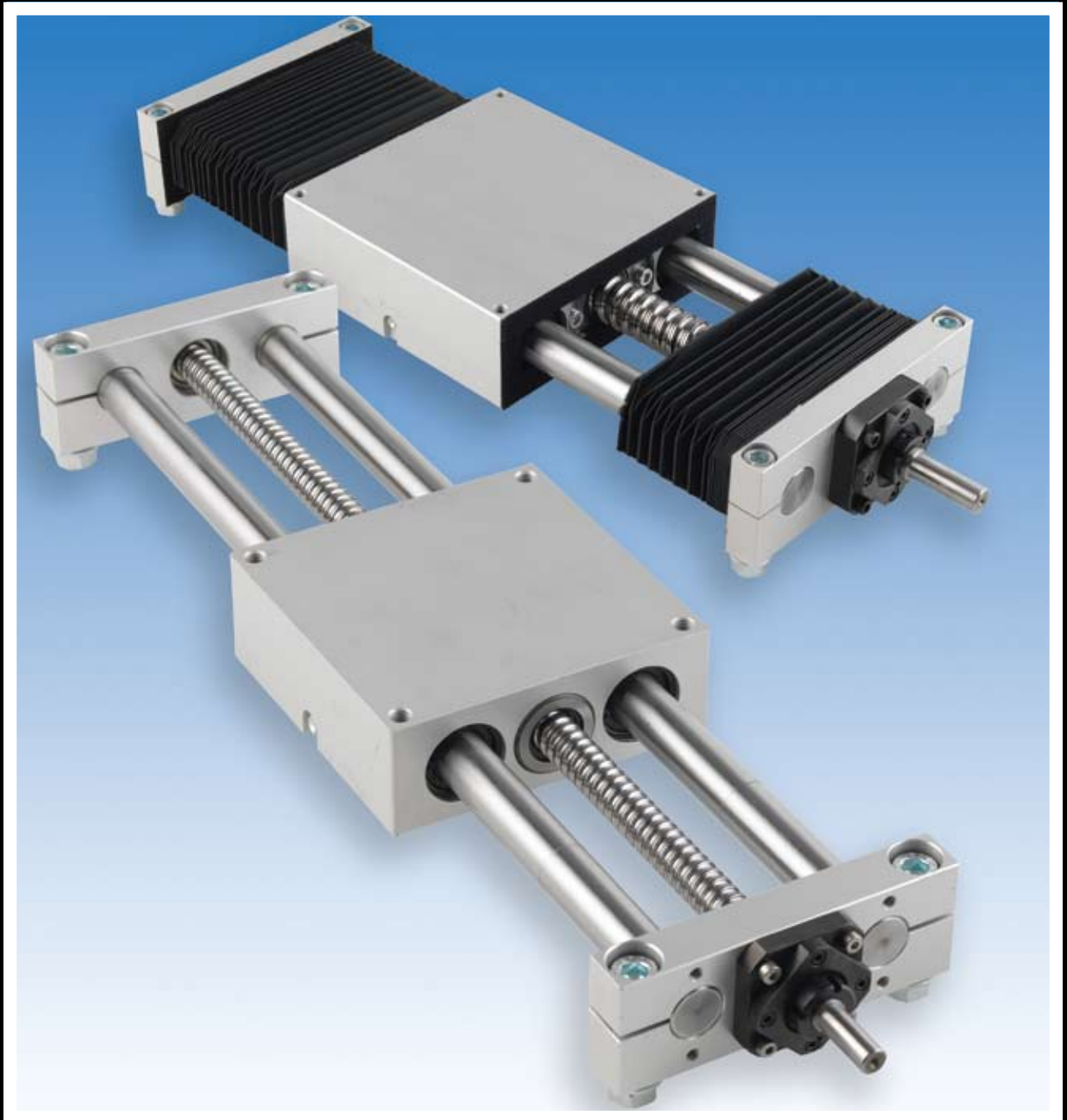


QUADRO TABLE



ROLLCO

SPECIALIZED
ON LINEAR MOTION

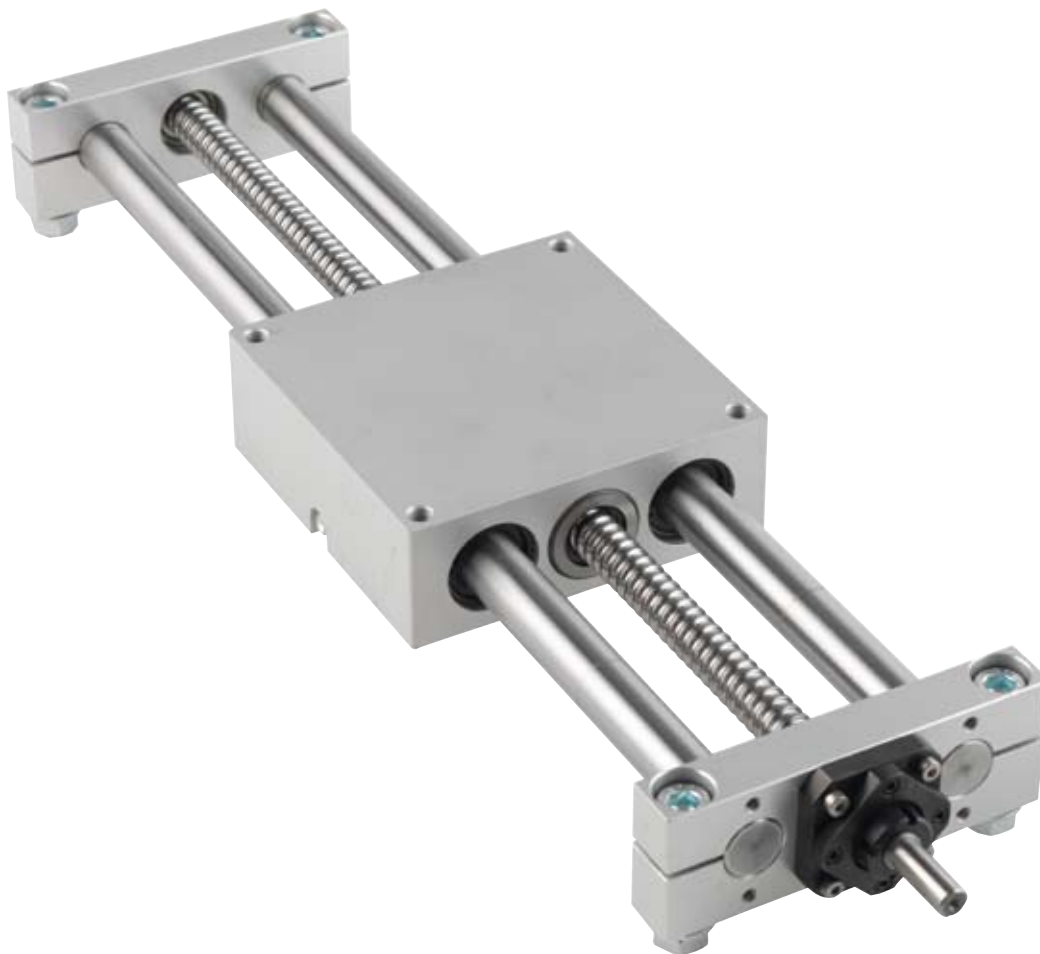
Index

Product overview and order code 3 - 4

Diagram all types 5

Bellow and adjustment wheel 6

One partner for linear components 7



PRODUCT OVERVIEW AND ORDER CODE

With the linear table unit from Rollco you can save both time and money. The unit is designed to fulfil the need of an easy to mount unit for medium precision (1/10 mm.)

The unit is a ready to mount linear table unit with ball screw or lead screw and ball bushings. Can be supplied as a standard version, with or without bellows, or easily modified according to your need.

- Corrosion resistant version - please contact Rollco.
- Reduced or eliminated clearance between screw-shaft and nut for more accurate stroke - please contact Rollco.
- Self aligning ball bushings are mounted in the unit as a standard to secure that all the balls are in contact with the shaft also if the shaft is slightly bending due to the load.
- Customer designed mounting flange for motor and/or customer designed end-machining of the screw shaft - please contact Rollco.
- For life time calculation we refer to the Ball Screws and Linear Ball Bearings catalogues.

Order Code

QME 20 - 360 - B - W - SR1605

Bushings & shafts

QME = Self aligning ball bushings and hardened steel shafts

Size

20 = Shaft diameter 20

Stroke

360 = 360 mm stroke

Bellow

B = Bellow

Without letter B = without bellow (QME20-360)

Adjustment wheel

W = Adjustment wheel

Without letter W = without adjustment wheel

Screw type

SR082,5 - for QME12

SR1605 - for QME20

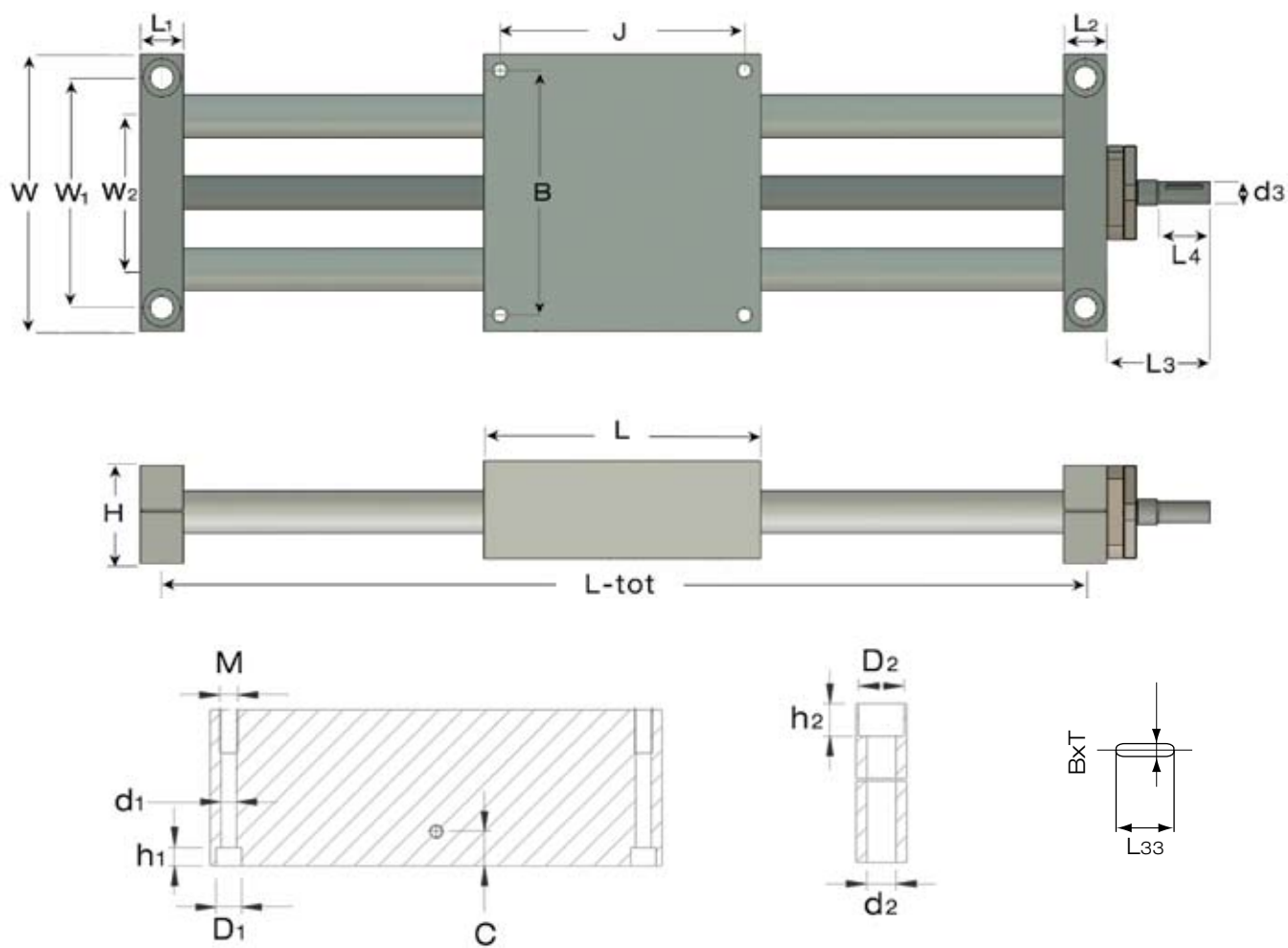
TR16x4 (lead screw) - for QME20

SR3205 - for QME30

SR3210 - for QME30

SR3220 - for QME30

PRODUCT OVERVIEW



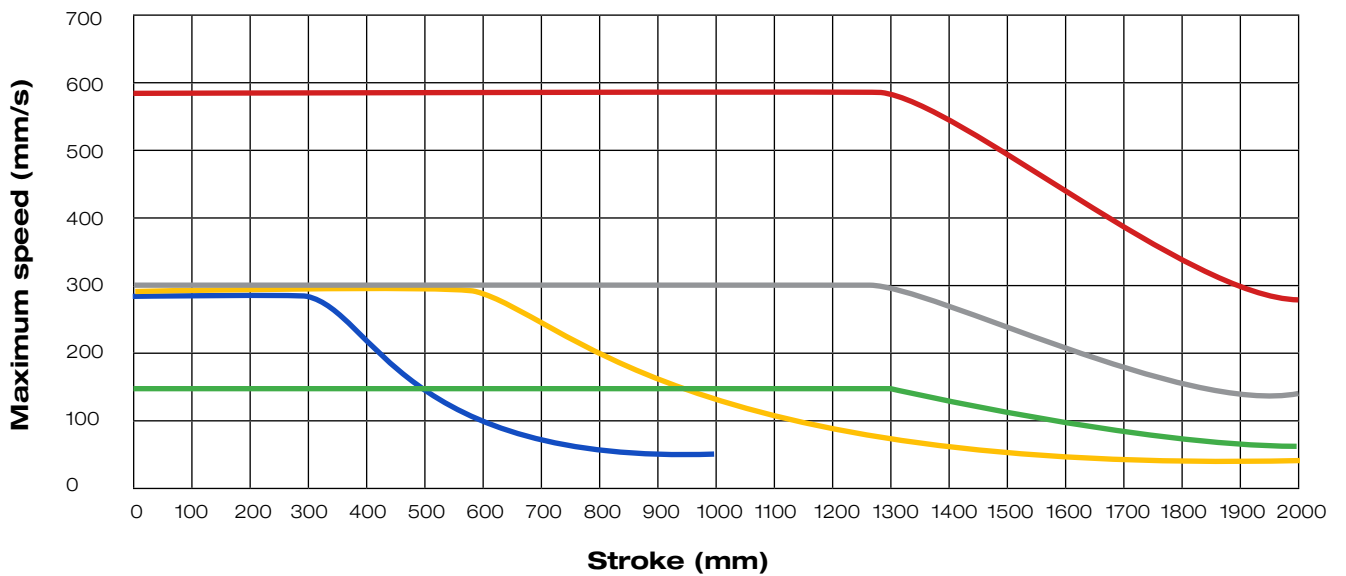
Unit: mm

Size	J	B	L	L1	L2	H	W	W1	W2	M	C
QME 12	73	73	85	12	14	31,5	85	73	45	M 6x12	7,5
QME 20	115	115	130	20	20	48	130	108	72	M 8x18	7,5
QME 30	184	184	200	22	22	70	200	178	130	M 8x18	15

Size	d1xD1xh1	d2xD2xh2	L3	L4	d3	BP9x L33x T	L-tot*
QME 12	5,2x10x5,5	5,5x10,7x5,7	23	8	4	no keyway	stroke+98
QME 20	6,8x11x8,5	11x18x13,5	49	25	10	3x18x1,8	stroke+150
QME 30	6,8x11x8,5	13x20x14	80	45	16	5x36x3	stroke+222

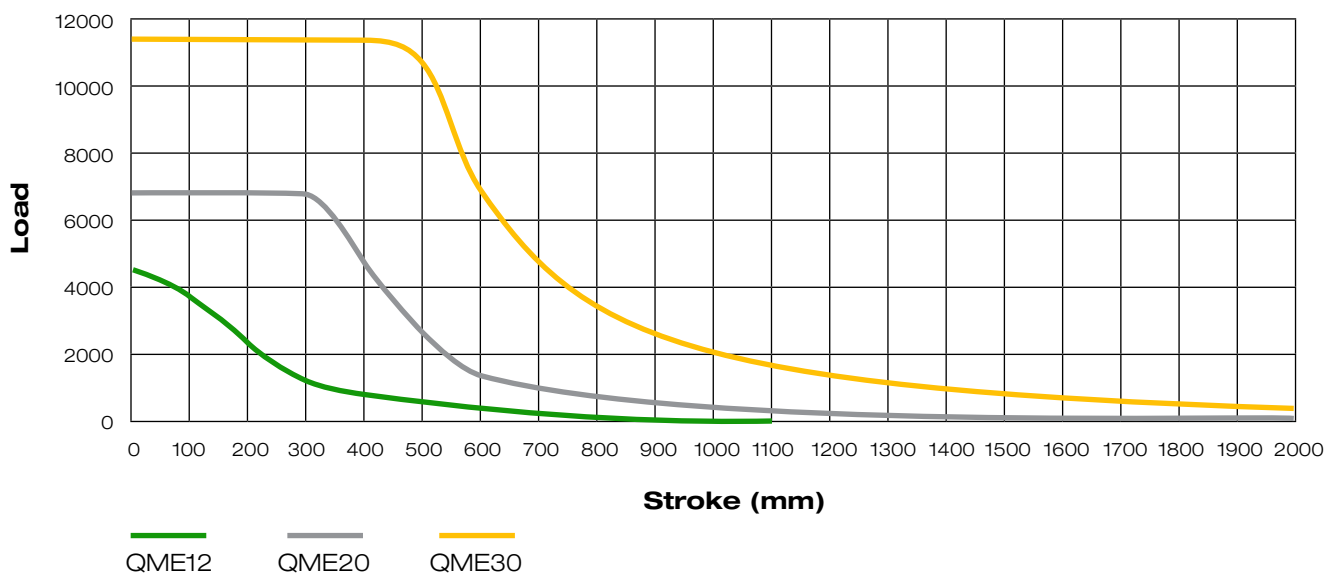
*We strongly recommend to add minimum 50 mm to the stroke for safety. You can find more details and 3D CAD-files at our homepage.

Maximum speed and stroke - based on different ball screws



Screw type (diameter x lead)	Ball Screw SR082,5	Ball Screw SR1605	Ball Screw SR3205	Ball Screw SR3210	Ball Screw SR3220
Unit type	QME12	QME20	QME30	QME30	QME30
Fixed weight kg	1,11	3,92	12,54	12,7	12,77
Weight kg/m	2,2	6,4	17,1	16,7	17,1

Maximum static load (N) and stroke



Bellow

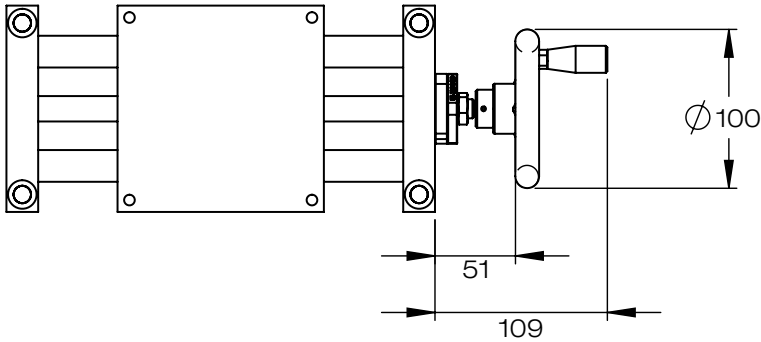


Unit: mm

Size	Length max fold	Length min fold	Unuseable length
QB 12 (for QME12)	10,4	1,6	5
QB 20 (for QME20)	13	1,6	5
QB 30 (for QME30)	18	1,6	5

Adjustment Wheel

QW20



One Partner for Linear Components:



LINEAR RAIL SYSTEM WITH ROLLERS

In stead of balls 4 raceways with rollers. Ideal for high load capacity.



LINEAR RAIL SYSTEM

Monorails. Compatible dimension. Very competitive product range.



HAND CLAMPS

Manual clamping element for Linear Rail Guides



MINIATURE LINEAR RAIL SYSTEM

Range from 3 mm up to 15 mm.



BALL SCREWS

Cylindrical and flange-nut.



BELT DRIVEN LINEAR UNIT

Complete unit -easy to mount



QUADRO TABLE

Complete linear drive unit. Can be supplied with protection bellow.



BALL BEARINGS

Linear ball bearings and hardened steel shaft.



BELLOWS

We produce and supply bellows according to your specific needs.



C-RAIL

A simple and cost effective linear bearing system



LIGHT TELESCOPIC

Telescopic systems for smooth movement. Steel and aluminium.

Rollco AB
Box 22234
Pinnmogatan 1
250 24 Helsingborg
Sweden
Tel. +46 42 150040
Fax +46 42 150045
www.rollco.se

Rollco A/S
Bramdrupskovvej 15
6000 Kolding
Denmark
Tel. +45 7552 2666
Fax +45 7552 0708
www.rollco.dk

Rollco OY
Kuohuntie 2
36200 Kangasala
Finland
Tel. +358 207 57 97 90
Fax +358 207 57 97 99
www.rollco.fi

Rollco Norge AS
Bergliveien 2
3400 Lier
Norway
Tel. +47 32 84 00 34
Fax +47 32 84 00 91
www.rollco.no

Rollco Taiwan
No. 28, Lane 125, Da-an Road
Shulin City 238
Taiwan
Tel. +886-2-8687-2726
Fax +886-2-8687-2720
www.rollco-tw.com



ROLLCO
SPECIALIZED
ON LINEAR MOTION